



## HIGH-EFFICIENCY REGULATED PUMPS FOR DOMESTIC HOT WATER

## ECO-ETHERMA EM

### DESCRIPTION

The high-efficiency, continuously, manually adjustable pump for domestic hot water, freely flowing ball axis permanent magnet motor and ECM technology.

### APPLICATIONS

Domestic hot water circulating systems. ECO-ETHERMA EM pumps comply with the requirements for use in domestic hot water circulating systems and form a systemic protection against legionella.

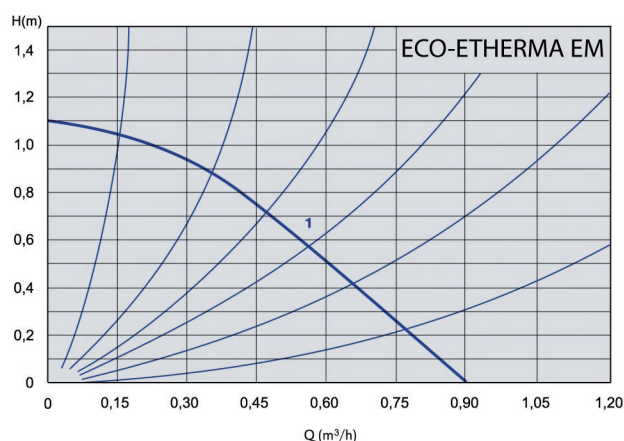
### OPERATION

The pump automatically adjust the pressure, according to system resistance. The timer installation is possible for selecting the starting time of the operation and adjusting the thermostat.

### PRODUCT DETAILS

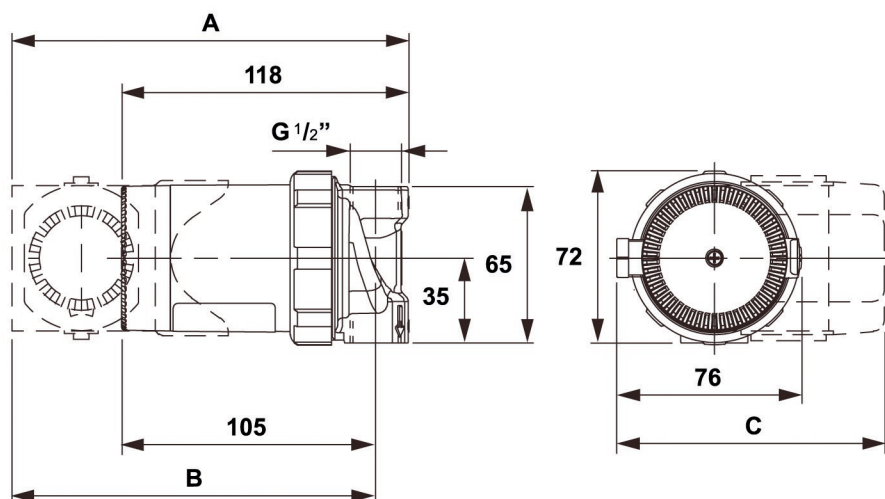
- The high efficiency of the ECM technology
- Energy savings
- 2 possible performances
  - EM version with bronze housing
  - EM-U version with bronze housing and timer
- Easy handling and installation
- Robust and compact construction for long life
- Specially adapted to the independence of lime scale
- Easy to use and small

Pump component	Material
Housing	Bronze
Ceramic bearings	Ceramics
Rotor impeler	polyamide



ECO-ETHERMA EM	DN	Fitting length	N. Pressure	Weight	Code
ECO-ETHERMA EM	15	65 mm	PN 10 bar	0,9 kg	
ECO-ETHERMA EM-U	15	65 mm	PN 10 bar	1,0 kg	

Dimensions	L	DN	A	B	C
ECO-ETHERMA EM	65 mm	15	118	105	76
ECO-ETHERMA EM-U	65 mm	15	163	150	110



## TECHNICAL DATA

Flow Q up to 0,9 m<sup>3</sup>/h

Pressure H up to 1,1 m

Power 2 - 8 Watt

Nominal pressure 10 bar

Permissible mediums

- Water, mixed with glycol, parameters must be checked in the mixture of water with over 20% of glycol
- Pure non-explosive liquid media free from mineral oils and without solid particles

Permissible temperature range

- Medium temperature from +5 °C to +95 °C

Minimum inlet pressure

0,05 bar < 75 °C Temperature of medium

0,28 bar < 90 °C Temperature of medium

Electrical connection

Voltage 1 ~ 230 V, 50/60 Hz

Motor/Electronics

- Maximum power 8 W
- Shaftless spherical motor with ECM technology
- Protection IP 44
- Insulation class F
- Optional timer